

HOW DO I DO THIS WITH MY OWN CLASSROOM?

Logistics:

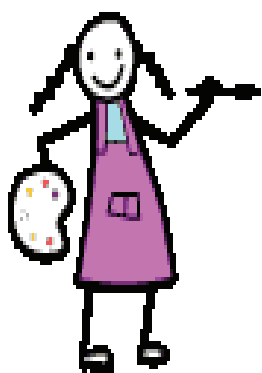
- ⇒ Open Room with space for students to move (ie empty classroom, gym other activity area)
- ⇒ Timing: Plan for 9-10 classes for at least a 90 minute time block. We plan two hour sessions, which leaves time at the end for student evaluations
- ⇒ Scheduling: Schedule early with your teaching artist so that you can plan around any planned or unplanned (ie snow days) breaks.
- ⇒ Enhancement: If you have an college in your area, contact the college about students helping in the class as peer volunteers. Recommendations of who to contact: College Volunteer Services or Service Learning Departments, School of Education, Social Work or Art



Collaboration Ideas:

If you partner with a non-profit agency, you have MORE options, including: better contacts to artists, better methods for assuring quality experiences, and a community building experience for your students

- ⇒ Your local VSA arts District (see previous page)
- ⇒ Your local Arts Council
- ⇒ Your local Community Theatre



Funding:

How much does this cost and where will I get the money?

- ⇒ TALK to your principal or transition coordinator to see if there is any funding available for your classroom budget. *Some contribution goes a long way to finding outside funding sources!*
- ⇒ The Michigan Council for Arts & Cultural Affairs Mini-Grant Program (*providing this funding survives the current budget negotiations) You can ask for up to \$4,000, but it must be matched with other dollars
- ⇒ Your Community Foundation— many local community foundations have small grants available for youth grants (administered by students for student programs) and for small teacher grants Generally is about \$500—\$1000
- ⇒ Wal-Mart, Sam's Club and Meijer all have some Community Contribution grants that they can make on annual basis. General grant size is \$250—\$1000
- ⇒ Talk to your non-profit partner about other possible resources that they may know about for your community



COST: A twenty class-hour class will cost between \$3,000—\$5,000 depending on where you live. Artist fees can be more expensive in urban communities and mileage costs can be a factor in rural communities.

